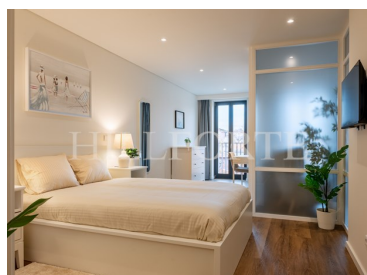
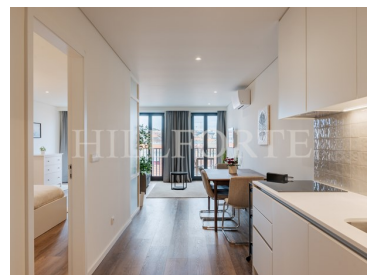




## Cedofeita, Santo Ildefonso, Sé, Miragaia, São Nicolau e Vitória - Apartment



**2** Bedrooms   
 **2** Bathrooms   
 **79,54** Area (m<sup>2</sup>)   
 **85,69** Land Area (m<sup>2</sup>)   
 **524 000 €** (EUR €)

### Luxurious 2 bedroom apartment in the center of Porto

2-bedroom apartment with an area of 86 sqm and with a small balcony of 3 sqm in the Marquesa Palace, a stunning rehabilitation project located in the heart of Porto's historic center. This beautiful property pays homage to the urban architecture of the 15th century while providing the modern amenities of the 21st century.

The building, formerly known as 'Paço da Marquesa', has been transformed into 16 luxurious high-standard residential units. The apartments range from 70.85 to 143.85 m<sup>2</sup> and feature one or two bedrooms, offering various options to suit your needs.

Each unit is fully equipped with air conditioning, double glazing, and a fully equipped kitchen. They



**Camilla Costa**

+351 917 709 292 <sup>2</sup>

ccosta@hillforte.com

**T +351 911 162 830 <sup>2</sup> · E info@hillforte.com**  
**Mercado de Ribeira, Av. 24 de Julho 1º andar, 1200-479 Lisboa**  
**AMI 21687**

<sup>1</sup> (Call to national fixed network) | <sup>2</sup> (Call to national mobile network)



can be sold fully decorated and furnished.

The developer is also offering management services, including the possibility to come with guaranteed profitability, which covers expenses such as maintenance, condominium, water, electricity, internet, television, and insurance.

Located in the oldest part of Porto, the Marquesa Palace is just a stone's throw away from the famous São Bento station and the stunning Dom Luís I Bridge. You'll find all of Porto's main tourist attractions within walking distance.

This historic property is perfectly situated amidst traditional commerce, cultural attractions, and leisure areas, including the Museu das Marionetas do Porto, the Palácio das Artes, the Museu do Tesouro da Sé do Porto, the Museu de Arte Sacra e Arqueologia, and the Praça da Ribeira. You'll also have access to a vast transportation network, restaurants, supermarkets, and schools.

Contact us today to experience the perfect blend of history and modern luxury at the Marquesa Palace.

## Property Features

- Balcony
- Laundry
- Built year: 2024
- Lift
- Energetic certification: B-
- Terrace
- Double glazing
- Floors: 5
- Furnished



**Camilla Costa**

+351 917 709 292 <sup>2</sup>

ccosta@hillforte.com

**T +351 911 162 830 <sup>2</sup> · E info@hillforte.com**  
**Mercado de Ribeira, Av. 24 de Julho 1º andar, 1200-479 Lisboa**  
**AMI 21687**

<sup>1</sup> (Call to national fixed network) | <sup>2</sup> (Call to national mobile network)